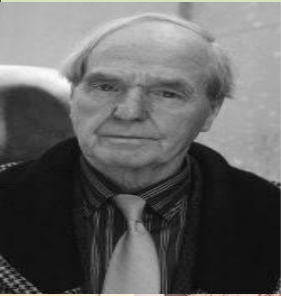


# Drawing and painting

## Artist: Henry Moore, Gary Hodges and Hokusai



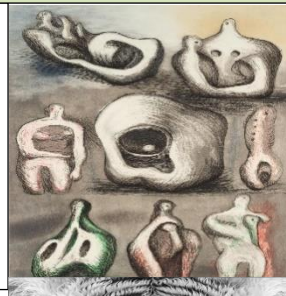
**Henry Moore** is a modern artist who was from Yorkshire, England. He was best known for his sculptures. During the Blitz, Moore began drawing people sheltering in the London Underground. His drawings captured the popular imagination, recognized as a sensitive yet powerful response to war. From this, he became an official war artist.



**Gary Hodges** is a contemporary British artist and publisher who is much admired internationally for his graphite pencil wildlife art.



**Hokusai** is a modern Japanese ukiyo-e artist of the Edo period. He was a painter and a printmaker. He is best known for the woodblock print series 'Thirty-Six Views of Mount Fuji', which includes the iconic print 'The Great Wave of Kanagawa'.



### Year 3 Drawing Skills

1. Experiment with different grades of pencil and other mediums.
2. Use sketchbooks to collect and record visual information from different artists.
3. Draw for a long period of time on their own.
4. Use different media to achieve variations in line, texture, tone, colour, shape and pattern
5. Plan, refine and change drawing when necessary.

### Year 3 Painting skills

1. Mix a variety of colours and know which primary colours make secondary colours.
2. Use a developed colour vocabulary.
3. Experiment with different effects and textures including blocking in colour, washes, thickened paint.
4. Work confidently on a range of scales e.g. think brushes on small pictures.

## Vocabulary

Tone	How light or dark a mark or colour is.	Tints	Adding white to make lighter shades
Shading	Drawing darker pencil marks show darker tones	Tones	Adding black to make shades darker.
Portrait	A photograph, painting or other artistic representation of a person, in which the face is always predominant.	Texture	The way something feels when touched.

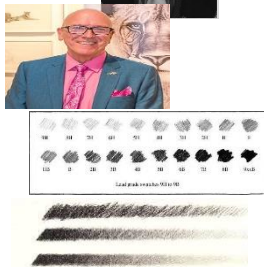
## What are we learning?

1



This lesson is learning about **Light and Shade**.

- **Pencil labels:** B stands for **Black**. The higher the number is beside the B the darker mark it will make.
- **HB-** a middle ground colour/pencil that can be used for every day.
- **Gradient-** a colour gradually changing (in this instance becoming lighter/darker).
- **Tone-** How light or dark a mark or colour is.
- **Shading-** Drawing darker pencil marks show darker tones.



2

In this lesson, you will be using the knowledge from last week to experiment with tone and shade.



- **Gradient-** a colour gradually changing (in this instance becoming lighter/darker).
- **Tone-** How light or dark a mark or colour is.
- **Shading-** Drawing darker pencil marks show darker tones.

3

In this lesson, you will be using the skills learnt from previous lesson to complete a portrait of yourself independently.

- **Gradient-** a colour gradually changing (in this instance becoming lighter/darker).
- **Tone-** How light or dark a mark or colour is.
- **Shading-** Drawing darker pencil marks show darker tones.
- **Portrait-** A photograph, painting or other artistic representation of a person, in which the face is always predominant.



4

This lesson will be experimenting with poster paints to create tints and tones.



- **Tints-** Adding white to make a lighter shade.
- **Tone-** Adding black to make a darker shade.

5



- Planning your piece of work allows you to think about the **different lines** and **patterns** you are going to use.
  - It allows you to think about which colours work well together (**analogous colours**)
- When planning, think about;
- **Proportion**- size of different features of face
  - **Scale**- size of face

6

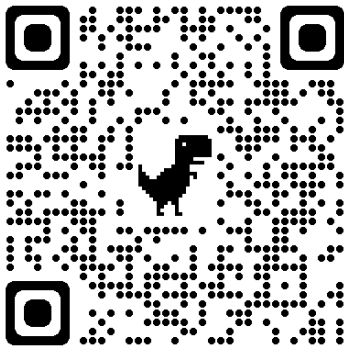


- **Explain choices made** during the process, such as selection of colours and lines/marks made.
- Explain how the artwork is **similar/different** to Sandra Silberzweig's work
- Say what **worked well** and what could be **improved** with explanations



Year 1 and 2 drawing and painting skills

## Helpful links



Scan to practice mark making, lines and patterns



Scan to practice blending using a different medium (watercolour paint)



Scan to complete your Quiz